



WOOLWORTHS 73RD NATIONAL CHERRY FESTIVAL

Friday 1 - Sunday 3 December 2023
nationalcherryfestival.com.au





Cherries





IT'S CHERRY SEASON - THE SWEETEST TIME OF YEAR!

Our town of Young is nestled in the heart of the beautiful Hilltops Region, where on the first weekend in December, the National Cherry Festival arrives.

This year the National Cherry Festival once again offers a program packed full of fun events. Who can eat a cherry pie in the shortest possible time? Who can spit a cherry seed the furthest distance of all?

Marvel at the fireworks, enjoy the street parade, sing along with the live music, and get ready to shop at the many quality market stalls... and for the thrill seeker amuse yourself on the rides in carnival alley.

Take a leisurely stroll along the main street and support our local retailers who offer a variety of unique shopping experiences.

NATIONAL CHERRY FESTIVAL ENQUIRIES

HILLTOPS VISITOR INFORMATION CENTRE

-  Anderson Park / Railway Station
Lovell Street, Young NSW 2594
-  1800 628 233
-  vic@hilltops.nsw.gov.au
-  nationalcherryfestival.com.au
-  National Cherry Festival
-  Hilltops Region



Thank you to our wonderful visitors and to our valued community. **We are looking forward to sharing the 73rd National Cherry Festival with you, enjoy!**

The National Cherry Festival Committee



Proud supporter of the National Cherry Festival

Woolworths Young, located on
Boorowa Street.



Woolworths
The fresh food people

THANKS TO OUR MAJOR SPONSORS



Woolworths

Ray White Young & Harden

Southern Cross Care

Southwest Slopes Credit Union



Valley Fresh

Young Karaoke & Trivia

Colonial Motel

Donges Supa IGA



Wilders Bakery

Poppas Fudge Factory

Young/Boorowa Community Transport

M&M's Music

While you are in town, why not go exploring over the weekend?

Visit our art galleries, clubs, pubs and coffee shops. Explore our cherry orchards to buy the freshest cherries of all - you can even pick your own straight from the trees. Relax at our local wineries and experience the award-winning wines from the Hilltops Region. Or if staying close to the action is more your style, drop into the Visitor Information Centre at Anderson Park, which has a large range of local produce and hand-crafted goods.





FRIDAY 1 DECEMBER

5pm Entertainment on the Main Stage, Anderson Park

- Trudi Summerfield
- Jane Dee
- Circus Box
- Harry Cleverdon

6pm - 6.30pm Official Opening

8.45pm National Cherry Festival Fireworks Display

Presented by Ray White
Young & Harden



FRIDAY 1 DECEMBER

RayWhite.
YOUNG | HARDEN



Ray White Young
Phone: +61 (2) 6382 5800
Email: young.nsw@raywhite.com
Website: raywhiteyoung.com.au
Address: 37 Main Street
Young, NSW 2594

Ray White Rural Harden
Phone: +61 (2) 6382 5801
Email: rural.harden.nsw@raywhite.com
Website: raywhiteruralharden.com.au
Address: 16 Neill Street
Harden, NSW 2594





SATURDAY 2 DECEMBER



9am Entertainment Main Stage, Anderson Park

- 9am Sing Australia
- 9.30am Hilltops Choir
- 10am Young Town Band
- 10.30am Leanne Simms Academy of Dance
- 10.45am Luke Jewitt
- 11.20am Harry Cleverdon
- 12pm Christine Wishart Dance Studio
- 12.15pm Young Public School Band
- 12.45pm Phat Brass
- 1.30pm Celtic Tattoo Massed Band Spectacular presented by **Young Karaoke & Trivia**



All day fun

- Bells Amusements presented by **South West Slopes Credit Union**
- Regional Farmers Markets in conjunction with National Cherry Festival Market Stalls



4pm Woolworths National Cherry Festival Street Parade Boorowa Street

5pm Live entertainment on the Main Stage

- 5pm Phat Bras
- 6pm Announcement of the Cherry Growers Display Winners - place your vote in the box at the Young Visitor Information Centre
- Announcement of the Cherry Float Winners
- 6.15pm Circus Box
- 7pm The Young Ones



2.30pm Wilders Bakery Cherry Pie Eating Championships

Entries on the day. Prizes to be won. Registration from 2pm.



KEY



'Pick Your Own' Orchards



Shed Sales

Map is a guide only





SHED DOOR SALES

1. Back Creek Orchard

727 Back Creek Road
Young NSW 2594
P: 0438 166 215

2. Batinich Cherrymore Orchard

4001 Olympic Highway
Young NSW 2594
P: 0409 912 592

3. Gleannmohr Farm

4249 Olympic Highway
Young NSW 2594
P: 0470 489 114

4. Hillview Cherries

959 Spring Creek Road
Young NSW 2594
P: 0412 835 305

5. Stony Creek Orchards

633 Spring Creek Road
Young NSW 2594
P: 0438 987 933

6. Tyrone Orchards

561 Wickham Lane
Young NSW 2594
P: 0438 825 136

7. Valley Fresh Cherries & Stone Fruit

4179 Olympic Highway
Young NSW 2594
P: 0448 842 930

8. Willayoung Orchard

191 Willawong Street
Young NSW 2594
P: 0427 102 169

PICK YOUR OWN

9. Allambie Orchard & Café

3725 Olympic Highway
Wombat NSW 2587
P: 0418 462 821

10. Ballinaclash Orchard & Cellar Door

4321-4335 Olympic Highway
Young NSW 2594
P: 0418 271 770

11. Drive In Orchards

3494 Moppity Road
Young NSW 2594
P: 0433 245 134

12. Fairfield Orchard

3923 Olympic Highway
Young NSW 2594
P: 02 6384 3403

13. Hall Family Orchard

28 Ellerslee Road
Wombat NSW 2587
P: 0499 314 974

14. Hill-Lock Orchard

78 Race Creek Road
Wombat NSW 2587
P: 0439 947 727

15. Lynton Orchards

56 Roberts Road
Young NSW 2594
P: 0431 348 531

16. Main Range Orchard

3637 Olympic Highway
Wombat NSW 2587
P: 0438 843 285

17. Petal Falls Orchard

924 Kingsvale Road
Kingsvale NSW 2587
P: 0410 324 106

18. Top of the Hill Orchard

976 Spring Creek Road
Young NSW 2594
P: 0428 534 007

19. Wombat Heights

78 Race Creek Road
Wombat NSW 2587
P: 0481 355 543



PUBLIC TRANSPORT

WE HAVE MADE A NUMBER OF SPECIAL TRANSPORT ARRANGEMENTS FOR THE NATIONAL CHERRY FESTIVAL

OH, AND PARKING WOES?

They're a thing of the past with our convenient continuous courtesy bus looping between the Showground, Caravan Park, and Library.



**PROUDLY PRESENTED BY
YOUNG COMMUNITY
TRANSPORT**

There will be a shuttle service between Boorowa and Young on Saturday 2 December. For times and bookings phone Young Community Transport.

FURTHER INFORMATION

- 📍 133 Main Street, Young NSW 2594
- ☎ 02 6382 1518
- @ enquiries@youngboorowa.cccsl.org.au
- 🌐 youngcommunitytransport.org.au

SUNDAY 3 DECEMBER



7am

Entertainment, Anderson Park

7am to 10am

Donges Supa IGA Big Breakfast \$7 per person

8.30am to 10.30am

Bush Poets and Junior Bush Poets in association with Wombat Bush Poets

8am to 2pm

Handmade and Home Grown Markets

11am

Registration - Cherry Pip Spit

12.45am

Circus Box



11.30am

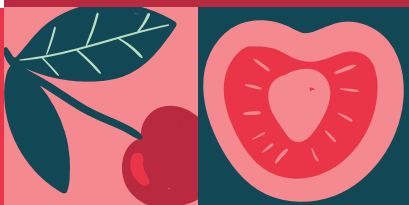
Valley Fresh Cherry Pip Spit Competition

Junior competition \$50 prize money. Ladies and Men's competitions \$100 prize money.

All day events

- Hawkesbury Working Kelpies Demo
- Mid West Axemen: Wood Chopping Championships presented by **Colonial Motel**

KNOW YOUR CHERRIES



A wide range of cherry varieties are available, extending the harvest season from early November to late December.

Cherries come in a vibrant range of colours, spanning from delicate white to bold red and even deep black. Cherries are unique, as they remain a truly seasonal fruit, amongst an abundance of year-round produce.

Early Varieties	Mid-Season Varieties	Late Season Varieties
Supreme: sweet Merchant: well balanced acid and sweet Vista: tart	Ron's Seedling: dark red, firm and sweet Stella: sweet Van: sweet to tart big flavour	Bing, Sweetheart: sweet Sylvia, Lipins, Simone: sweet varieties Black Douglas: sweet, juicy, firm dark flesh





ALL WEEKEND



Young Society of Artists 40th Annual National Cherry Festival Competitive Art Exhibition

Official opening Wednesday 29 November

7pm Young Town Hall

Ph: Heather 0431 258 832

\$10 Entry includes music, refreshments, door prize and awards

Exhibition Open Thursday 30 November to Sunday 3 December



25th Annual Cherry Festival Photographic Competition & Exhibition

Official opening Sunday 26 November

2.30pm Young Services Club

\$5 Entry includes refreshments

youngcameraclub2594@gmail.com

Exhibition Open Monday 27 November to Sunday 3 December



Carnival Alley presented by South West Slopes Credit Union

Amusements and Rides

Anderson Park



Hilltops Heritage Rally

Carrington Park, 6 Ripon Street, Young

Lego Exhibition

Baptist Church, 78 Nasmyth Street, Young





EXCITING CHANGES FOR THE 2024 CHERRY FESTIVAL COMPETITION

Next year, the National Cherry Festival Queen/King competition is embracing a modern approach, starting with inviting participants to choose their preferred title: Cherry Queen, Cherry King, or the brand-new title of Cherry Ambassador.

Our past Kings and Queens have always been outstanding ambassadors for our region and with the addition of the 'Ambassador' title, contestants will now have the freedom to choose how they approach the role.

In response to community feedback the title of 'Charity Queen' has been thoughtfully retired. However, the charity

component of the competition will remain a strong and integral part of the competition. Each entrant will have the opportunity to increase their overall judging score by supporting a local charity, not-for-profit community based club, or service provider in the Hilltops Region.

This competition aims to select an extraordinary advocate who will proudly represent not only Young but the entire Hilltops Region. The crowned winner will assume their distinguished role from the crowning ceremony in December 2024 and continue their representation in the region throughout the following year.





The 2024 Cherry Queen/King/
Ambassador Competition is open
to all individuals residing in the
Hilltops region, aged 18 years and
above and it's never too early to
register your interest.

If you think you may be interested
in participating in this competition
in 2024, please feel free to view the
National Cherry Festival Queen/
King/Ambassador Competition
Guide for more information by
scanning the QR code or drop into
the Visitor Information Centre in
Young to collect a printed copy.



WHAT'S ON DURING CHERRY SEASON

EVENTS THROUGHOUT NOVEMBER & DECEMBER

Open Daily

Cherry Harvest Exhibition

Special Guest Artist – Louise Adams
Burrangong Gallery
Young Visitor Information Centre,
Old Railway Station Lovell Street, Young

12 November 9.30am – 3pm

The Sir George Markets

Food, wine, design, local markets
The Sir George, Riverside Dr, Jugiong
Leonie 0411 155 024
FB: thesirgeorge

18 November

Harden Community Bank Show

Harden–Murrumburrah Showground
Woolrych St, Harden
hardenshowoffice@gmail.com
FB: MurrumburrahHardenShowSociety

23 November 2pm – 8pm

Twilight Markets

Gold coin entry
Uniting Church Ground, 82 Lynch St,
Young
The Hub 6382 6328

25 November 10am – 2pm

Boorowa CWA Fun in the Park

Celebrate 100 years of Boorowa CWA.
Entertainment and refreshments
Boorowa Recreational Park
Pudman St, Boorowa
CWA Boorowa Branch 0488 188 593
secretaryboorowacwa@gmail.com

1 December 5pm

Cherry Festival Cup Harness Race Meeting

TAB and refreshments. Free entry
Young Showground, 120 Wickham Lane,
Young
FB: Youngharness

2–3 December 9am

National Cherry Festival Young & Region Farmers Market

Anderson Park carpark, Lovell St, Young
Bev 0491 150 940

5 December 5pm

Harness Race Meeting

TAB and refreshments. Free entry
Young Showground, 120 Wickham Lane,
Young
FB: Youngharness

9 December 8.30am–12.30pm

Uniting Church Markets

Baked goods, plants, books, jewellery,
craft items and more.
Uniting Church Grounds, 82 Lynch St,
Young (cnr of Cloete & Lynch)
Uniting Church Young 6382 1519

10 December 9.30am – 3pm

The Sir George Markets

Christmas Market
The Sir George, Riverside Dr, Jugiong
Leonie 0411 155 024
FB: thesirgeorge

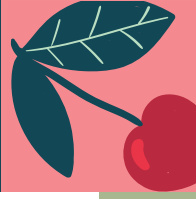
10 December 11am

Allied Grain Systems Cherry Festival Cup

Young Golf Club, 191 William St, Young
Young Golf Club 6382 1543
younggolfclub@gmail.com
Barry Hazelgrove 6382 3704



The National Cherry Festival Committee take this opportunity to thank the following local businesses for their continued support and commitment to the National Cherry Festival.



Amber Blythe Conveyancing
 Annie B's Full House
 Anytime Fitness Young
 Arma Insurance Brokers
 Bakers Delight Young
 Ballinaclash
 Byrne Demolition PL
 Elders Real Estate Young
 Elders Rural Services Young
 Ella Bache Young
 Elliotz
 Fred O'Reilly's Printing
 Freeman Vineyards
 Golden Gance
 Grove Estate Wines
 Hilltops Community Hub

Hobson Air Conditioning & Electrical
 Horizons/Sportspower
 KP Carmody & Co
 Label A
 Lime n Soda
 MA Steel
 New Life Community Church
 Patterson Bros Funerals
 Poppa's Fudge & Jam Factory
 Powderlys Pumping & Irrigation Services
 Propellorhead IT
 Redline Trailers
 Revolution CD
 Robynette Fabric Salon

South West Fuel
 TechMe2
 The Joinery Store
 The Pink Pot Garden Spot
 Tripolian Bakehouse
 Turner's Furniture
 Watson Toyota
 Wombat Café Cottage
 Young Eyes Optometry
 Young Hills Pty Ltd
 Young Radio Cabs Co-Operative
 Young Tourist Park
 Young Veterinary Clinic
 Young Warehouse
 Young Workwear Country & Gifts

SUPPORTERS



A PROFESSIONAL TEAM WITH A LOCAL FOCUS

Our highly qualified team has unrivalled expertise gained from over 26 years in the business. We understand the importance of completing work as efficiently as possible, saving you time and money.

As a privately owned family business based in the Hilltops Region of NSW, we've built up a solid reputation for providing personal, professional and efficient service. As a result, we have longstanding relationships with our clients that have seen us partner with them on many different projects.



RESIDENTIAL, COMMERCIAL AND INDUSTRIAL DEMOLITION



ENVIRONMENTAL AND HAZARDOUS MATERIAL



CONCRETE CRUSHING



SCAFFOLDING, CLADDING AND HOARDING

GET IN TOUCH TODAY



(02) 6382 5453
 0428 692 371



www.byrnedemolition.com.au
byrnedemo@ozemail.com.au

HILLTOPS HIGHLIGHTS SAVE THE DATE 2024

Hilltops Off The Beaten Track

13 – 24 March

Harden Kite Festival

12 October

Boorowa Irish Woolfest

6 October

National Cherry Festival Young

29 November – 1 December



Discover **#hilltopsregion**

nationalcherryfestival.com.au

visithilltopsregion.com.au



Supported by the

